

# The Specifiers Guide

Veneered Panels

## Decorative Veneered Panels



Detailed information on the specification and application of real wood decorative veneered panels



# Decorative Veneered Panels which are Suitable for a Variety of Applications

## High quality veneered panels

Unlike imitation wood such as melamine or composite laminates, wood veneers are unique in their natural beauty and appeal. Each timber species has its own particular character and no two veneers will exhibit the same colour and texture. Veneers are cut from the log in different ways to produce different grain figure.

Key attributes of decorative wood veneered panels include:

- Extensive and varied timber species
- Natural grain and figure
- High quality
- Variety of core options

An extensive range of real wood veneered panels and custom veneering services ensure that the specific desires of the client can always be met.



One of the characteristics that defines wood veneer appearance, in addition to the species, is the grain figure itself. The final result can be controlled by applying different veneer slicing techniques.

### Slicing techniques

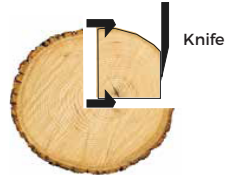
Crown Cut



Crown Cut appearance



Quarter Cut



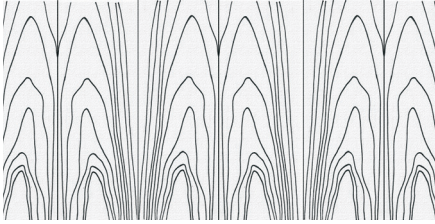
Quarter Cut appearance



Veneer slicer

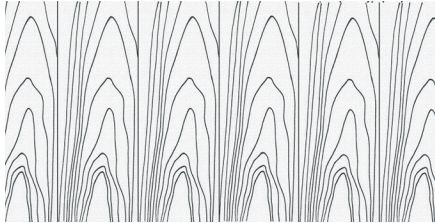
A slicing machine in which the flitch (piece of log) is raised and lowered against the blade and slices are made. This yields veneer that looks like sawn pieces of wood, cut across the growth rings.

The veneer strips are joined to form the layons (complete sheets of veneer). Different jointing techniques can be used depending on the intended decorative effect.



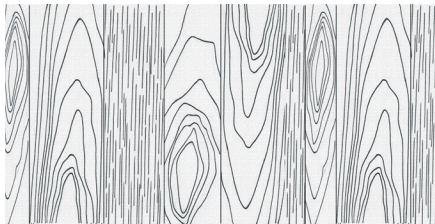
### Book Match

The most common method. Veneer strips are turned before being jointed so that each piece is symmetrical to the previous one. This results in a "mirrored" or "open book" effect.



### Slip Match

Veneer strips are jointed without turning them over. This method therefore produces a repetitive wood grain figure.



### Mixmatched

The veneer strips are jointed randomly. This jointing process provides a variety of options when considering grain structure, colour, and a combination of strip widths.

## VENEER GRADES

---

There is a market standard that ranks veneer grades. It is a visual classification of faces, based on the various characteristics of natural wood: Symmetrical or balanced structure, tone, uniformity.

According to this classification, three grades of veneered panels are defined:



### Natural

Varied and irregular structure with greater variation in colour, along with some knots and other natural imperfections.



### Select

Standard quality, good structure, small variations in colour and appearance.



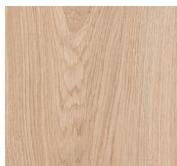
### Plus

Well-defined and centered structure. Uniform colour and minimal natural wood imperfections.

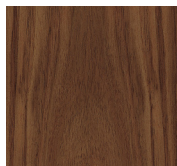
### ***A Standard Range of Veneer Species***



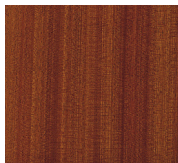
Ash C/C



Oak C/C



Black Walnut C/C



Sapele Q/C



Sapele C/C



Maple C/C



Cherry C/C



Steamed Beech C/C



Baltic Pine C/C

C/C - Crown Cut  
Q/C - Quarter Cut

---

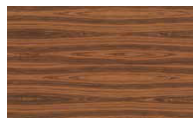
### ***A Select Range of Veneer Species***



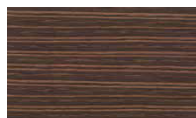
Nature Vintage Oak



Rustic Oak



Mumbai Rosewood



Kandy Ebony



Fumed Forte Oak



Fumed Grandis



Europa Walnut



Grigio Oak



Grey Vintage Oak



## DECORATIVE VENEERED PANEL TYPES

Panel Core/Substrate	Key Features	Applications
<b>Poplar Plywood</b> 	<ul style="list-style-type: none"> <li>▪ Light weight poplar core</li> <li>▪ Cost effective</li> <li>▪ Wide range of veneer species available</li> <li>▪ Multiple size options</li> </ul>	<ul style="list-style-type: none"> <li>▪ Furniture</li> <li>▪ Exhibitions</li> <li>▪ Displays</li> <li>▪ Leisure vehicles</li> </ul>
<b>Birch Plywood</b> 	<ul style="list-style-type: none"> <li>▪ Superior quality core</li> <li>▪ Superior quality face veneers</li> <li>▪ Wide range of veneer species available</li> <li>▪ Multiple size options</li> </ul>	<ul style="list-style-type: none"> <li>▪ Furniture</li> <li>▪ Shopfitting</li> <li>▪ Model making</li> <li>▪ Decorative applications</li> <li>▪ Staging &amp; Seating</li> <li>▪ Kitchens</li> <li>▪ Bathrooms</li> </ul>
<b>MDF</b> 	<ul style="list-style-type: none"> <li>▪ Versatile and highly machinable</li> <li>▪ Wide range of veneer species available</li> <li>▪ Multiple size options</li> </ul>	<ul style="list-style-type: none"> <li>▪ Furniture</li> <li>▪ Exhibition</li> <li>▪ Displays</li> <li>▪ Interior design</li> <li>▪ Kitchens</li> <li>▪ Bathrooms</li> </ul>
<b>Flexi-Veneer</b> 	<ul style="list-style-type: none"> <li>▪ High quality veneers</li> <li>▪ Perfect for use for furniture panels including curved surfaces</li> <li>▪ Wide range of veneer species available</li> <li>▪ Sizes: 2440mm x 1220mm</li> </ul>	<ul style="list-style-type: none"> <li>▪ Barfitting</li> <li>▪ Shopfitting</li> <li>▪ Cabinet work</li> </ul>
<b>Blockboard</b> 	<ul style="list-style-type: none"> <li>▪ Lightweight</li> <li>▪ Wide range of veneer species available</li> <li>▪ Sizes: 2440mm x 1220mm</li> </ul>	<ul style="list-style-type: none"> <li>▪ Barfitting</li> <li>▪ Shopfitting</li> <li>▪ Hotels</li> <li>▪ Furniture</li> <li>▪ Fire surrounds</li> <li>▪ Boatbuilding</li> </ul>
<b>Edging Tape</b> 	<ul style="list-style-type: none"> <li>▪ Wide range of veneer species available</li> </ul>	<ul style="list-style-type: none"> <li>▪ Designed to complement the above products</li> </ul>

---

**CONTACT:**

**Hanson Plywood Limited**  
Drakes Industrial Estate  
Shay Lane, Halifax  
West Yorkshire, HX3 6RL

**Tel:** 01422 330444  
**Fax:** 01422 330706  
**Email:** [sales@hanson-plywood.co.uk](mailto:sales@hanson-plywood.co.uk)  
**www.hanson-plywood.co.uk**

For more information visit: [www.hanson-plywood.co.uk](http://www.hanson-plywood.co.uk)

