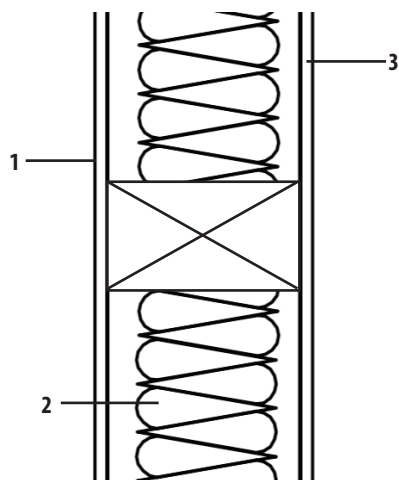


FIRE RATED WALL PARTITIONS

WALL TEST SUMMARY SHEET

Below are the fire rated wall partitions which have been tested and assessed by Resistant Building Products to achieve various performance ratings. If a wall is constructed in the same manner using the same materials as those described in the reports, it should be expected to achieve the corresponding fire resistance rating. Please contact our office to request further information on all our fire testing and assessment data as well as to request reports. Additional information and product downloads can be found online.

60 MINUTE LOADED TEST WITH 9MM MULTI-PRO XS



1. 9mm Multi-ProXS
2. Rockwool Roll Batt Quilt; Thickness 100mm
3. 9mm Multi-ProXS

Frame: Nominal 38x89mm timber frame studs at 400mm centres.
Noggins located horizontally midway down frame.

Fixings: Multi-proXS fixed using 3.5 x 50mm drywall screws.

Overall Wall Height: 2.7 metres

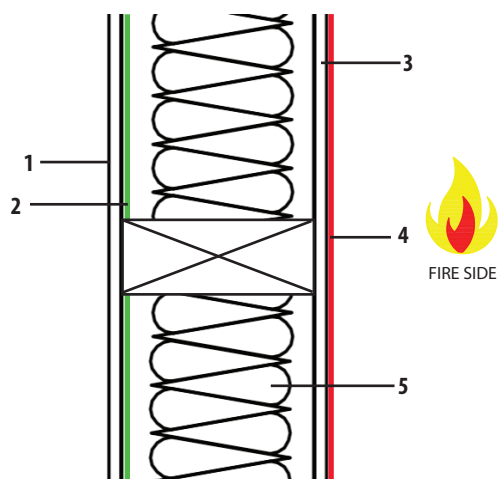
Overall Wall Thickness: 107mm

Tested By: Exova Warringtonfire

Tested To: BS 476: Part 21: 1987

As this wall partition is symmetrical in nature, it can withstand fire to the same resistance criteria from either side.

60 MINUTE LOADED TEST WITH 9MM MULTI-PRO XS



1. 12.5mm British Gypsum Fireline plasterboard with COVA ST PVC covering
2. Thermasheet foil membrane
3. 9mm Multi-ProXS
4. 0.5mm steel with Plastisol finish
5. Rockwool RWA45 Insulation; Thickness 100mm, density 45kg/m³

Frame: Nominal 95x35mm timber stud frame at max. 600mm centres.
Noggins behind horizontal board joints and at max. 2400mm centres.

Fixings: 30mm long nails

Total Implied Load: 21kN

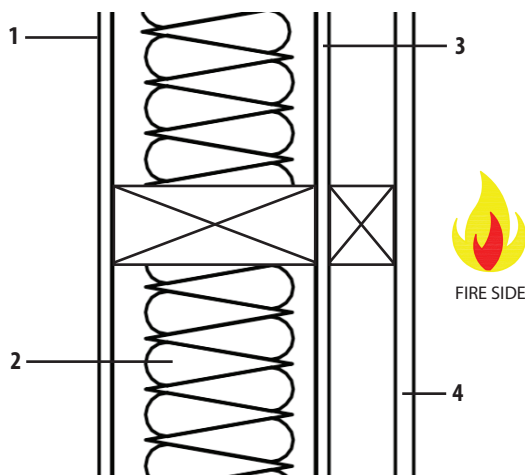
Overall Wall Height: 2.7 metres

Overall Wall Thickness: 117mm

Tested By: Chiltern International Fire Limited

Tested To: BS 476: Part 21: 1987

90 MINUTE LOADED TEST WITH 9MM MULTI-PRO XS



1. 9mm Multi-ProXS
2. Knauf ECOSE Insulation; Thickness 140mm, density 45kg/m³
3. 9mm Multi-ProXS
4. 12.5mm British Gypsum Fireline Plasterboard

Frame: Nominal 138x38mm timber stud frame at max. 600mm centres.
45x45mm timber studs internally at 600mm centres (for Fireline board).

Fixings: 80mm long steel wood screws for 9mm Multi-ProXS to 138x38mm stud
32mm long steel wood screws for 12.5mm Fireline to 45mm stud.

Total Implied Load: 69.24kN

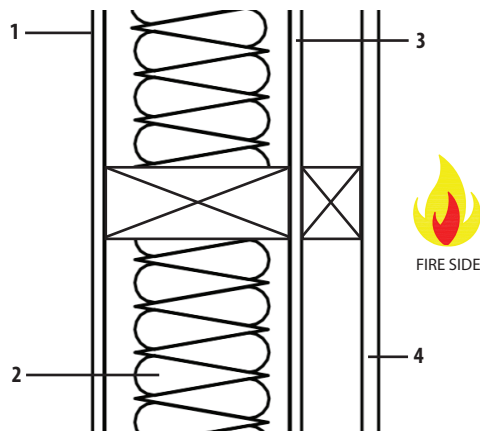
Overall Wall Height: 2.7 metres

Overall Wall Thickness: 213mm

Tested By: Chiltern International Fire Limited

Tested To: BS 476: Part 21: 1987

60 MINUTE LOADED ASSESSMENT WITH 9MM MULTI-PRO XS



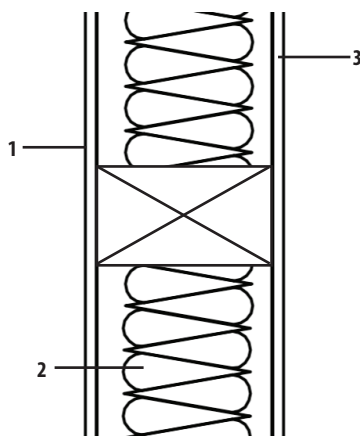
1. 9mm Multi-ProXS
2. Knauf ECOSE FrameTherm Slab 35; Thickness 90mm, density 19kg/m³
3. 9mm Multi-ProXS
4. 15mm British Gypsum Fireline Plasterboard

Frame: Nominal 89x38mm timber stud frame at max. 600mm centres.
45x45mm timber studs internally at 600mm centres (for Fireline board).

Fixings: 80mm long steel wood screws for 9mm Multi-ProXS to 89x38mm stud
32mm long steel wood screws for 15mm Fireline to 45mm stud.

Total Implied Load: 38kN
Overall Wall Height: 2.7 metres
Overall Wall Thickness: 167mm
Assessed By: Exova Warringtonfire
Assessed To: BS 476: Part 21: 1987

120 MINUTE UNLOADED TEST WITH 12MM MULTI-PRO XS



1. 12mm Multi-ProXS
2. Rocksilk Universal Slab RS45; Thickness 60mm, density 45kg/m³
3. 12mm Multi-ProXS

Frame: Nominal 60x48mm timber frame studs at max. 600mm centres.
Noggins behind horizontal board joints and at max. 2400mm centres.

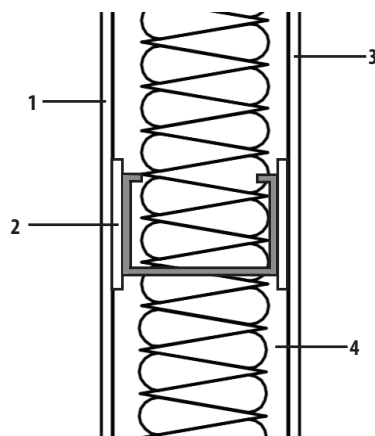
Fixings: 38mm long self tapping drywall screws

Overall Wall Height: 3.0 metres
Overall Wall Thickness: 84mm

Tested By: Exova Warringtonfire
Tested To: BS EN 1364-1: 1999

As this wall partition is symmetrical in nature, it can withstand fire to the same resistance criteria from either side.

60 MINUTE UNLOADED TEST WITH 12MM MULTI-PRO XS



1. 12mm Multi-ProXS
2. 6mm Multi-Pro fillets, 50mm wide either side of stud
3. 12mm Multi-ProXS
4. Rocksilk Universal Slab RS45; Thickness 60mm, density 45kg/m³

Frame: Nominal 70x36x0.5mm steel channel studs at max. 600mm centres

Strapping: Min. 100x0.6mm thick galvanised steel strapping at horizontal joints

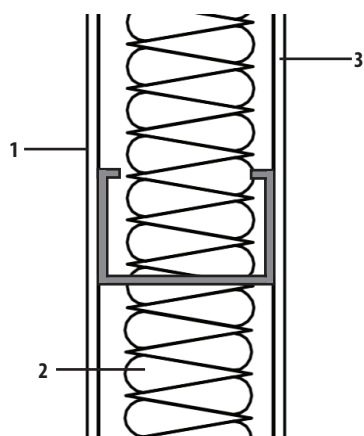
Fixings: 38mm long self tapping drywall screws

Overall Wall Height: 3.0 metres
Overall Wall Thickness: 106mm

Tested By: Exova Warringtonfire
Tested To: BS EN 1364-1: 1999

As this wall partition is symmetrical in nature, it can withstand fire to the same resistance criteria from either side.

60 MINUTE UNLOADED TEST WITH 12MM MULTI-PRO



1. 12mm Multi-Pro
2. Knauf Stonewool; Thickness 60mm, density 60kg/m³
3. 12mm Multi-Pro

Frame: Lindab Construline RdB studs. 70x35x0.56mm C-section studs.

Strapping: Lindab strapping. 40mm wide 1mm thick steel at 3000mm lengths.

Fixings: 38mm long self tapping drywall screws

Joint: Larsen fire retardant silicone.

Overall Wall Height: 3.0 metres
Overall Wall Thickness: 94mm

Tested By: BRE
Tested To: BS EN 1364-1: 1999

As this wall partition is symmetrical in nature, it can withstand fire to the same resistance criteria from either side.

*NOTE: Drawings are horizontal cross section. Not to scale.