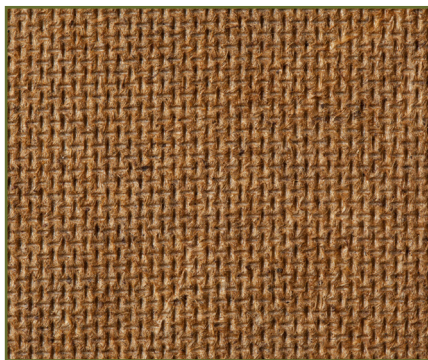


The Specifiers Guide

Hardboard

Hardboard



This guide details a range of Hardboard products along with technical data for all specifications



Cost effective panel made from highly compressed wood fibres

High Density & Cost Effective




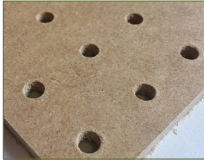

Hardboard is manufactured to be a low-cost and versatile panel. The natural resin in the timber is the bonding agent used in the manufacturing process rather than synthetic adhesives.

Key attributes of Hardboard panels include:

- High density
- Excellent dimensional stability
- Low Formaldehyde
- Versatile
- Cost-effective

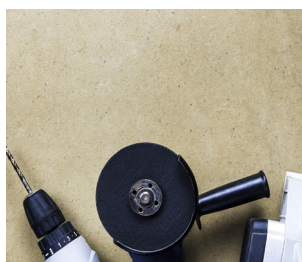
Other materials can be added during the production process depending on the desired usage. An example would be tempering the board with linseed oil to make it less susceptible.



Panel Core/Substrate	Key Features	Applications
Standard 	<ul style="list-style-type: none"> ▪ Suitable for interior use ▪ CE marked ▪ Applicable to EN 622-1/ EN 622-2 ▪ Sourced from well managed forests 	<ul style="list-style-type: none"> ▪ Furniture ▪ Panelling ▪ Protection ▪ Cabinet Walls ▪ Shelving Stands
Eucalyptus 	<ul style="list-style-type: none"> ▪ Smooth face ▪ CE marked ▪ Versatile ▪ Cost- Effective ▪ Applicable to EN 622-1/ EN 622-2 	<ul style="list-style-type: none"> ▪ Flooring ▪ Furniture ▪ Temporary Structures ▪ Packing ▪ DIY ▪ Building
White Painted 	<ul style="list-style-type: none"> ▪ Versatile ▪ Smooth faces ▪ Applicable to EN 622-1/ EN 622-2 ▪ CE marked 	<ul style="list-style-type: none"> ▪ Furniture ▪ Floor Coverings ▪ Wall linings ▪ Boxing ▪ Cabinet Walls ▪ Packaging ▪ Toy Manufacture
Perforated 	<ul style="list-style-type: none"> ▪ Applicable to EN 622-1/ EN 622-2 ▪ CE marked ▪ Smooth/Perforated Face ▪ Versatile 	<ul style="list-style-type: none"> ▪ Furniture ▪ Acoustic Construction ▪ Shop Fitting
Oil Tempered 	<ul style="list-style-type: none"> ▪ Moisture resistant ▪ Versatile ▪ CE marked ▪ Applicable to EN 622-1/ EN 622-2 	<ul style="list-style-type: none"> ▪ Flooring ▪ Wall linings - Internal ▪ Fascia ▪ Signs ▪ Roof linings - Internal

Hardboard Quick Reference Guide

Type	Application & Climatic Condition	Use Class (EN 335)
HB	General purpose boards for use in dry conditions	Use Class 1
HB.H	General purpose boards for use in humid conditions	Use Classes 1 & 2
HB.E	General purpose boards for use in exterior conditions	Use Classes 1,2 &3
HB.LA	Load-bearing boards for use in dry conditions	Use Class 1
HB.HLA1	Load-bearing boards for use in humid conditions	Use Class 2
HB.HLA2	Heavy duty Load-bearing boards for use in humid conditions	Use Class 2



CONTACT:

Hanson Plywood Limited
Drakes Industrial Estate
Shay Lane, Halifax
West Yorkshire, HX3 6RL

Tel: 01422 330444
Fax: 01422 330706
Email: sales@hanson-plywood.co.uk
www.hanson-plywood.co.uk

For more information visit: www.hanson-plywood.co.uk

