

## MEDITE PREMIER FR EUROCLASS B 60 Minute Fire Rated Partition Wall (non-load bearing)

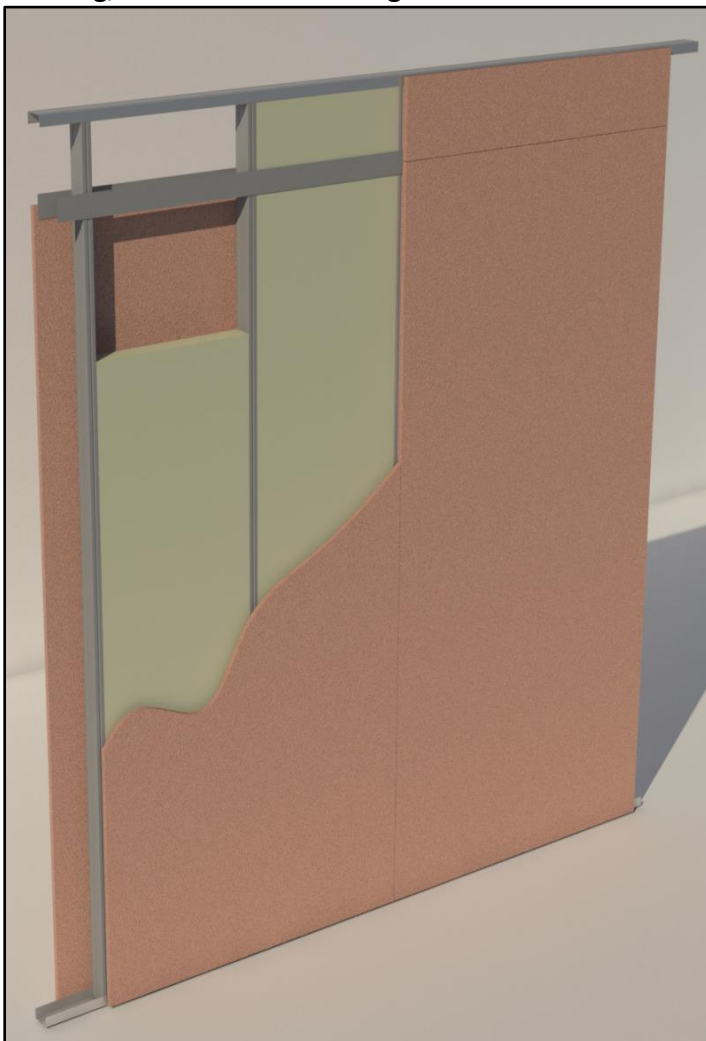
Medite Europe has achieved a 60 minutes fire rating, integrity and insulation in accordance with the criteria of BS 476: Part 22: 1987 for an internal wall partition. The illustrated non-load bearing partition wall design utilised two skins of 18mm **MEDITE PREMIER FR EUROCLASS B** and satisfied the performance requirements, confirmed by Exova Warrington fire report No. 330948.

### MATERIAL SPECIFICATION

<p><b>SHEETING</b> 18mm MEDITE PREMIER FR EUROCLASS B To EN 13501-1: 2007. + A1:2009</p>	<p><b>INSULATION</b> Rockwool RW5 mineral wool slabs 75mm Thick (1000mm x 600mm)</p>
<p><b>FRAMING/STUDWORK</b> Metal frame stud reference's refer to the British Gypsum - Gypframe System (or similar approved)</p>	<p><b>FIXING</b> British Gypsum Drywall Screws Order Code 27386/5 (or similar approved)</p>

### PARTITION SPECIFICATION

Framing, Insulation & Sheeting



**SHEETING**

18mm MEDITE PREMIER FR EUROCLASS B  
EN 13501-1: 2007. + A1:2009

**HEAD AND SOLEPLATE**

Channel "C" Type of galvanised mild steel, 72mm x 29mm x 0.50mm thick. (Gypframe System 72 FEC 50).

**VERTICAL STUD**

Stud "C" Type of galvanised mild steel, 70mm x 32mm x 0.50mm thick (including galvanizing) to be fixed at maximum 600mm centres. (Gypframe System 70 S 50).

**EXPANSION GAP**

15mm is required on all vertical studs at head of partition.

**HORIZONTAL JOINTS**

Fixing Strap of galvanised mild steel, 70mm x 0.50mm thick (including galvanizing) to be placed behind all horizontal joints to maintain board fixing centres. (Gypframe System GFS1).

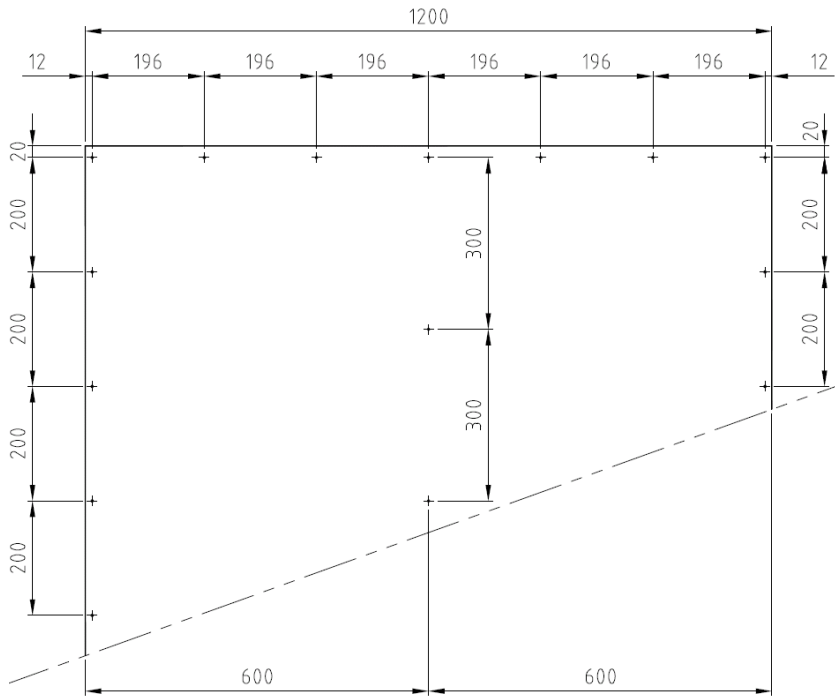
**INSULATION**

All partitions are to be fully insulated using Rockwool RW5 Insulation (1000mm x 600mm x 75mm) Insulation is to be friction fitted (Snug Fit), No loose fitting insulation. As per manufactures instructions.

**IMPORTANT**

*When fitting insulation, ensure that horizontal joints in insulation do not coincide with horizontal joints in the MEDITE PREMIER FR EUROCLASS B sheeting. All horizontal joints are to be offset/staggered by a minimum offset of no less than 100mm.*

**SHEETING FIXING CENTRES**



***Typical Panel Fixing Layout:***

Board Perimeter Fixing:  
200mm C/C (Nom.)

Intermediate Vertical Fixing:  
300mm C/C (Nom.)

Intermediate Horizontal Fixing :  
600mm C/C (Nom.)

**Screws:**  
British Gypsum Drywall Screws  
Order Code 27386/5

**TECHNICAL DATA**

60 minutes fire rating integrity and insulation in accordance with the criteria of BS 476: Part 22: 1987.

**DISCLAIMER**

- Any changes to the construction and materials described in this document will invalidate the fire rating.
- The Fire Safety Requirements of the building should be discussed with the Building Control Officer, the Fire Officer and all Engineering and Architectural interests prior to commencing work.
- For further information and/or technical advice, please contact MEDITE Technical Support Personnel through any of our European offices [www.medite-europe.com](http://www.medite-europe.com)
- Medite Europe reserves the right to modify this document without prior notification.