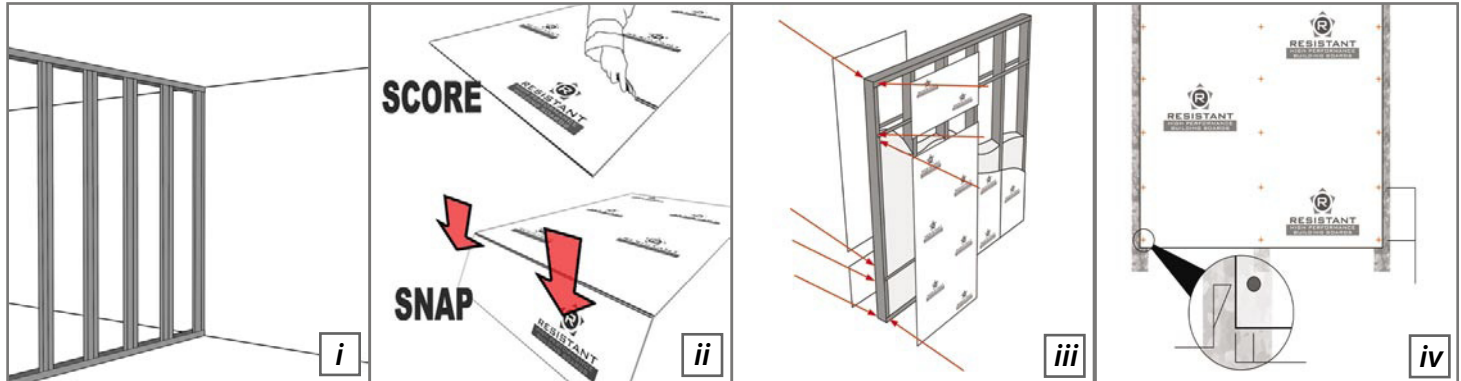




Fixing Guide



PREPARATION

Studwork

RESISTANT boards can be attached to either timber or steel studwork, depending on the nature of the job. Steel studwork has the advantages in that it is lighter, generally faster to install and has better acoustic properties. The layout of the partition is similar for both systems (*figure i*).

Fixings

Stainless steel screws or Nails can be used to fix the Multi-Pro XS board. Pregalvanised (Minimum 12 micron) sheathing nails such as ITW pasload 2.8 / 50mm smooth or annular nails suitable for service class 2 conditions.

RESISTANT Board

RESISTANT boards come in a standard size of 1200mm x 2400mm (with some variations depending on product) and varying thicknesses.

Cutting

In the case where boards may need to be custom cut to size, sheets are easily cut using the 'Score & Snap' method (*figure ii*). Mark out the desired size on the board with a pencil and rule. Score along the mark with a utility knife, making sure to slice the glass fibre mesh, then simply press the board downwards snapping it at the 'Score & Snap' line. Smooth and tidy up edges with a light abrasive. For areas of fittings and fixtures, cut-outs should be done before installing the board. RESISTANT recommend the use of a dust mask and eye protection at all times.

FIXING

Wall Attachment

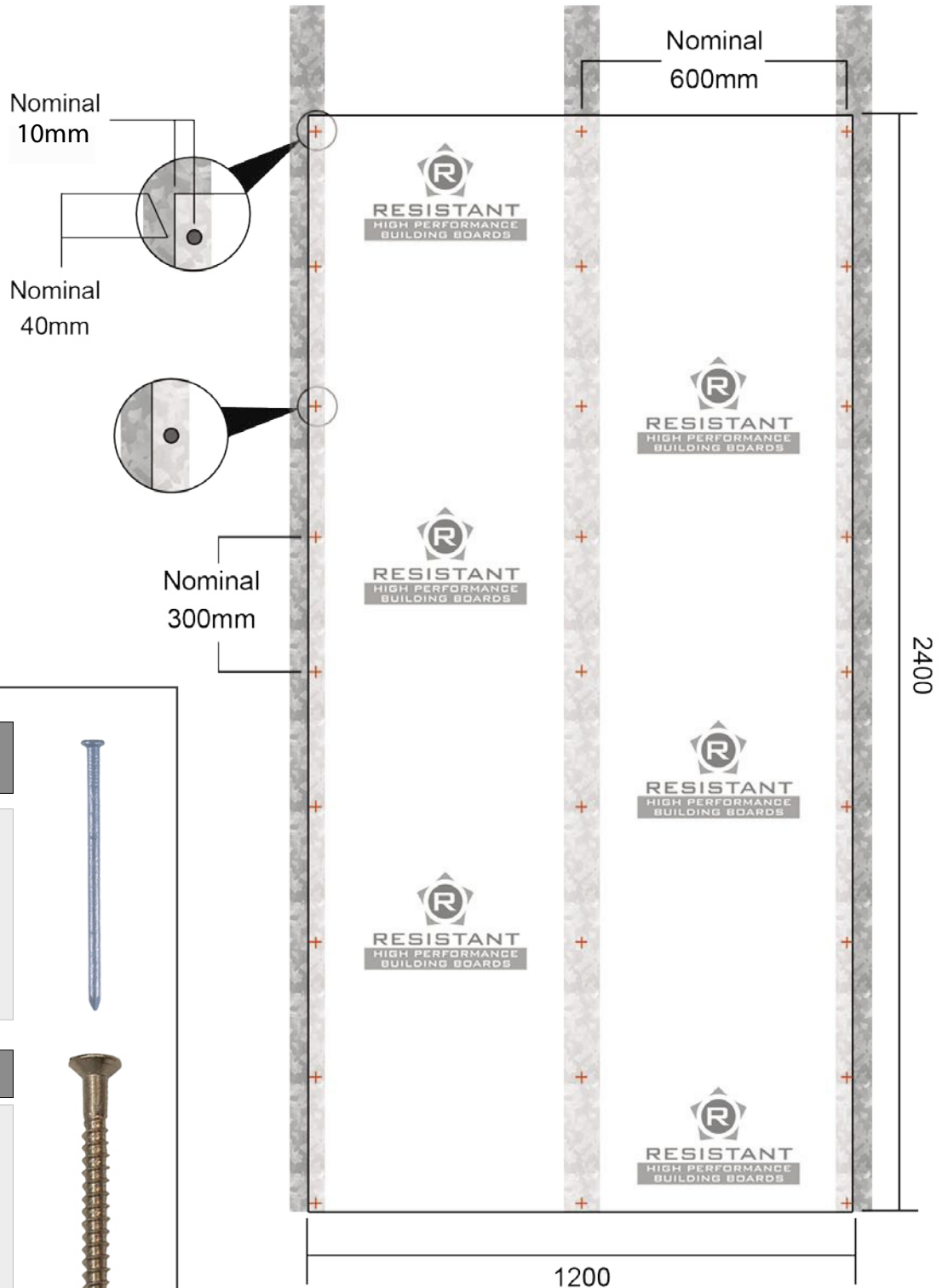
RESISTANT boards are attached onto the vertical studs in a symmetrical fashion each side of the partition (*figure iii*). They should be attached vertically on the subframe, with fixings at 300mm maximum centres vertically and 600mm maximum centres horizontally. Space fixings a minimum of 10mm from the edge and 20mm from the corner of the board (*figure iv*). When fixing, start at the centre and work outwards to prevent distortion within the boards. Boards should be offset so that four corners never meet at one point. Boards should be fitted with a 2mm fitting gap between and a minimum 6mm gap should be left above the finished floor level to allow for any settlement of the frame.

FINISH

RESISTANT Multi-Pro XS can be faced with Plastisol Steel, GRP, acrylic based render systems or brick slips,. This provides any designer with unlimited options.



Fixing Guide



Timber Frame Gun Nail

Pregalvanised
(Minimum 12micron)
sheathing nails

Annular Nails



Timber Stud

Wood Screw
Self Taping
Countersunk head

